

# Reintegrating people who have sexually abused into the community

Associate Professor Kelly Richards  
Queensland University of Technology

Professor Kieran McCartan  
University of the West of England

1

---

---

---

---

---

---

---

---

## Grateful To

- ▶ Funding by Australia's National Research Organisation for Women's Safety
- ▶ Research partners:
  - Offenders' Aid and Rehabilitation Service
  - Queensland Corrective Service
  - Bravehearts Foundation

2

---

---

---

---

---

---

---

---

**Australia**

Western Australia, Northern Territory, Queensland, South Australia, New South Wales, Victoria, Tasmania

Explored Australia's only Circles of Support and Accountability (CoSA) program

Explored Cultural Mentoring Program

Explored views of victimsurvivors about reintegration of people who have sexually offended

3

---

---

---

---

---

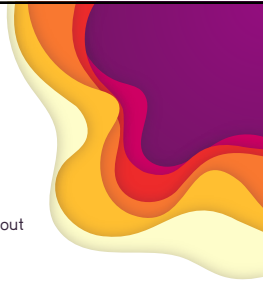
---

---

---

## Questions

- What do programs do?
- What are their key characteristics?
- How can we apply reintegrate people convicted of a sexual offence more effectively?
- What views do victim/survivors' have about reintegrating people who have abused?




---

---

---

---

---

---

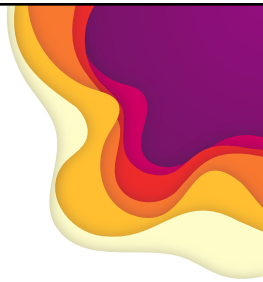
---

4

## Study 1: Circles of Support and Accountability

### CoSAs

- Prevent further victimization
- Help the core member function in the community (Harnett & Petrunik 2004: 100).
- Twin mantras:
  - no one is disposable
  - no more victims.
- Mission: To reduce risk by assisting reintegration and helping core members to lead productive, responsible lives




---

---

---

---

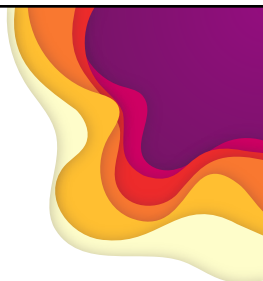
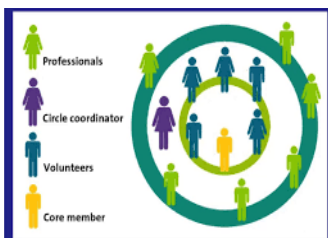
---

---

---

5

## Study 1: CoSA




---

---

---

---

---

---

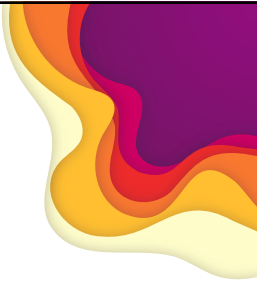
---

6

### Study 1

- CoSA exist in:
  - Canada
  - USA (Vermont; Fresno, CA, & Minnesota)\*
  - UK (England, Wales & Scotland)
  - Europe (Belgium, Netherlands, Catalonia, Latvia, Ireland)
  - Australia (Adelaide)

\*Recently unfunded



7

---

---

---

---

---

---

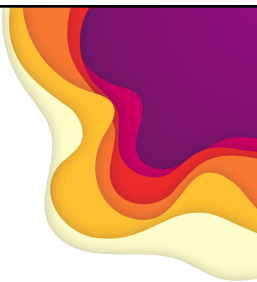
---

---

### Study 1

Program document review and interviews with:

- Core members (n=3)
- Staff (n=5)
- Stakeholders (n=3)
- Volunteers (n=7)



8

---

---

---

---

---

---

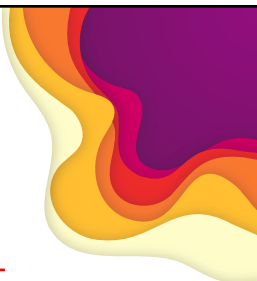
---

---

### Study 1: Key findings

- Program is in line with current knowledge about sexual reoffending and Good Lives Model

CoSA contribute to the safety of the community.



9

---

---

---

---

---

---

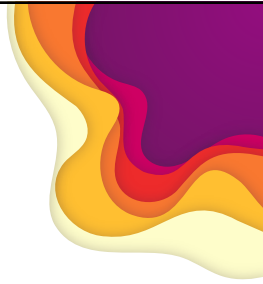
---

---

## Study 1: Key findings

Volunteers help with:

- ✓ address minimisations of offending
- ✓ reducing stress
- ✓ achieving goals
- ✓ development of prosocial identities
- ✓ meeting release requirements
- ✓ avoiding trigger behaviours
- ✓ treatment readiness




---

---

---

---

---

---

---

---

10

## Study 2: Cultural Mentoring Program

- ▶ CMP = support for ATSI sexual offenders released from prison under Queensland's *DPSOA*
- ▶ Elders provide **cultural and spiritual mentorship**




---

---

---

---

---

---

---

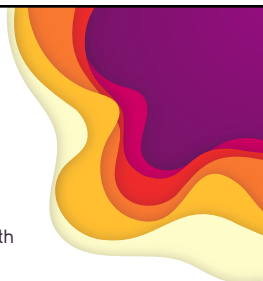
---

11

## Study 2: Cultural Mentoring

Semi-structured interviews with:

- People with a conviction in the CMP (n=14)
- Staff (n=6)
- Stakeholders who work in tandem with the CMP (n=12)




---

---

---

---

---

---

---

---

12



### CMP: Key findings

- ▶ focuses predominantly on “retraditionalisation” (connecting ATSI men with traditional culture)
- ▶ plays an important role as a **gateway program**

13

---

---

---

---

---

---

---

### CMP Key findings

- helps men accept value of **release requirements**
- Helps shape **desistance narratives**  
(Example *becoming a warrior again and becoming a father figure in the family* – Greg)

14

---

---

---

---

---

---

---

### Study 3: Victim/survivor views

- Three key findings from semi-structured interviews with victims/survivors (n=33):
- offender needs + victim needs + community needs = **related**
  - ▶ views about sexual offender reintegration are **instrumental** and **prospective**

15

---

---

---

---

---

---

---

### Study 3: Key findings

- ▶ Victim/survivors cautiously supportive of CoSA.

(example: We can't keep these people locked up forever. You can't put them on a desert island, they can't be put in the middle of Australia – they have to be reintegrated.)

---

---

---

---

---

---

---

16

### Study 3: Key findings

#### Competing views:

- I don't think they're worthy of it...they should just be all locked up somewhere...
- I think it would be a good thing..I think that sounds like a great idea..
- I see myself in the longer-term future maybe even considering looking into helping.

---

---

---

---

---

---

---

17

### Resources

- ▶ A Research Report, summary Research to Policy and Practice report, and fact sheet about CoSA are available here:

<https://www.anrows.org.au/project/community-based-approaches-to-sexual-offender-reintegration/>

---

---

---

---

---

---

---

18

Thank you –  
questions/comments?

- @DrKellyRichards  
[k1.richards@qut.edu.au](mailto:k1.richards@qut.edu.au)
- @kieranmc80  
[Kieran.mccartan@uwe.ac.uk](mailto:Kieran.mccartan@uwe.ac.uk)



---

---

---

---

---

---

---